

# Our work in managing climate risks

**Gail Hammond**

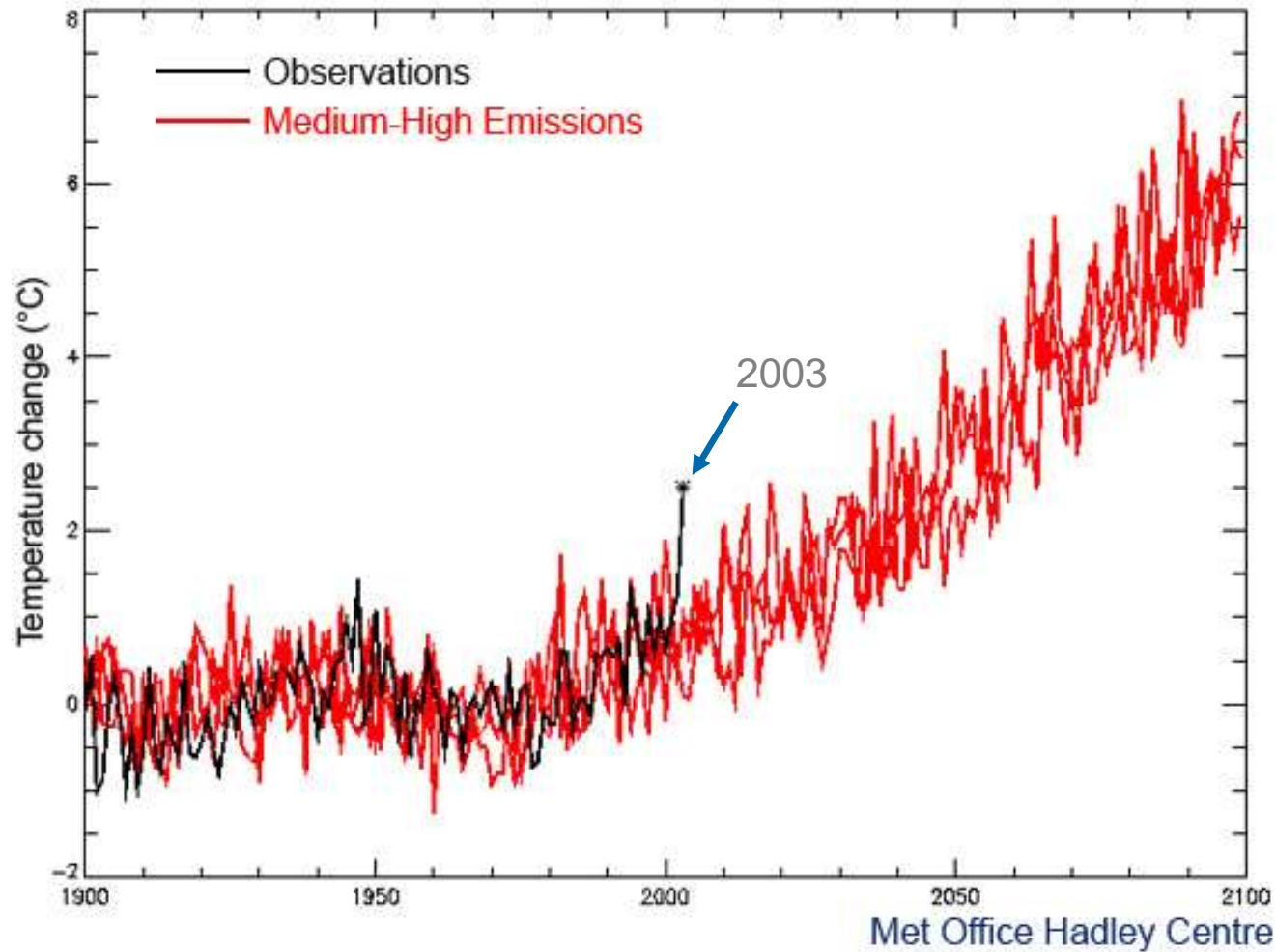
**Regional Climate Change Principal Officer**

**Yorkshire and North East Region**

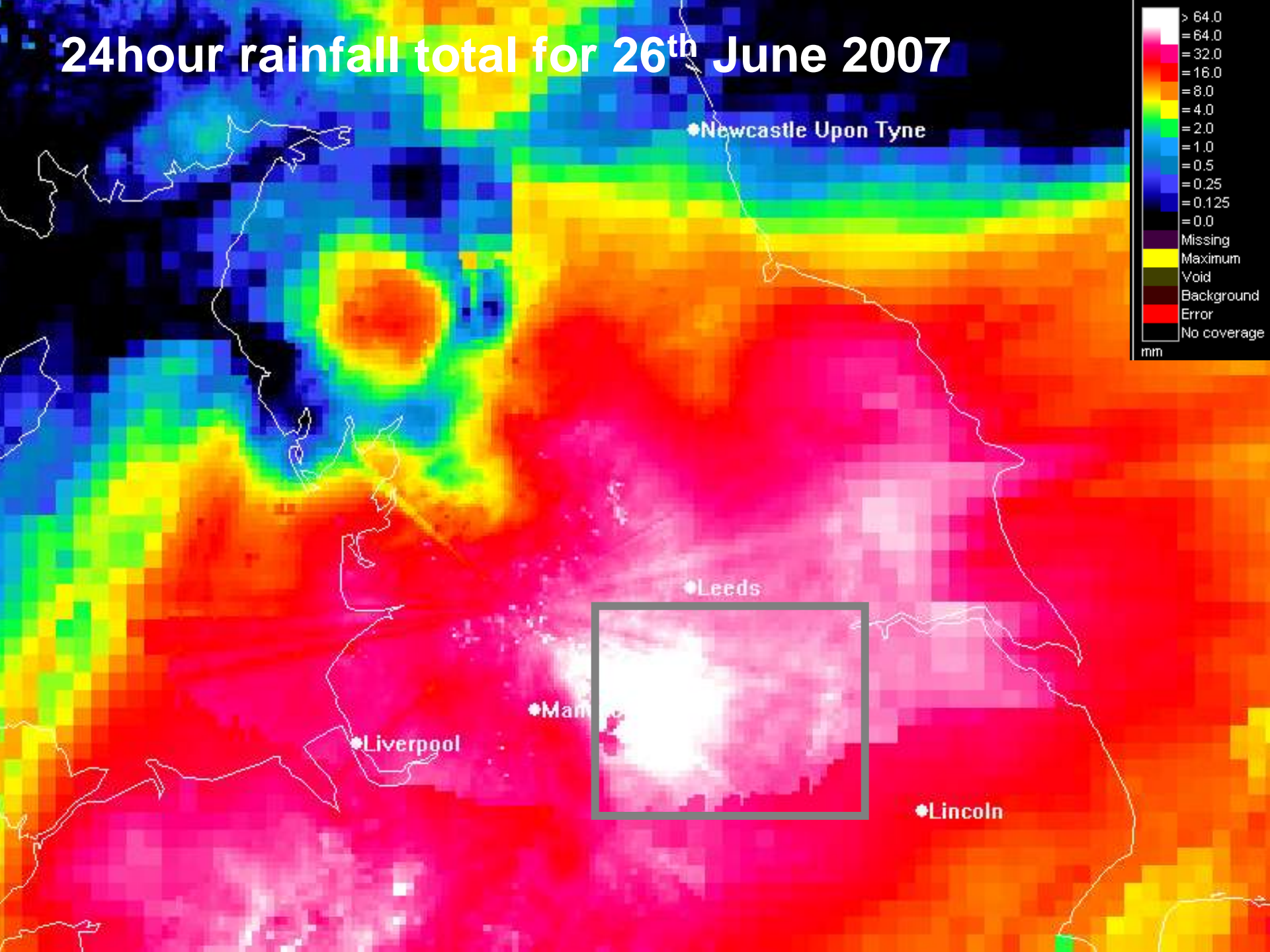


A changing climate, a fast growing population, a global economic downturn, and urgent need to secure future supplies of energy and food: these forces put enormous pressure on the environment and threaten people's ability to enjoy and be sustained by the world. Environment Agency 2009

# 2003 European summer temperatures could be normal by 2040s



# 24hour rainfall total for 26<sup>th</sup> June 2007



# too much water



**Royal Armouries and Fearn's Wharf 2002**

## Flood Events Leeds

- 1866
- 1946
- 2000
- 2004
- 2005
- 2007
- 2008

# too much water



East Street 1946

# too much water







# Turlow Court

After....



Before....



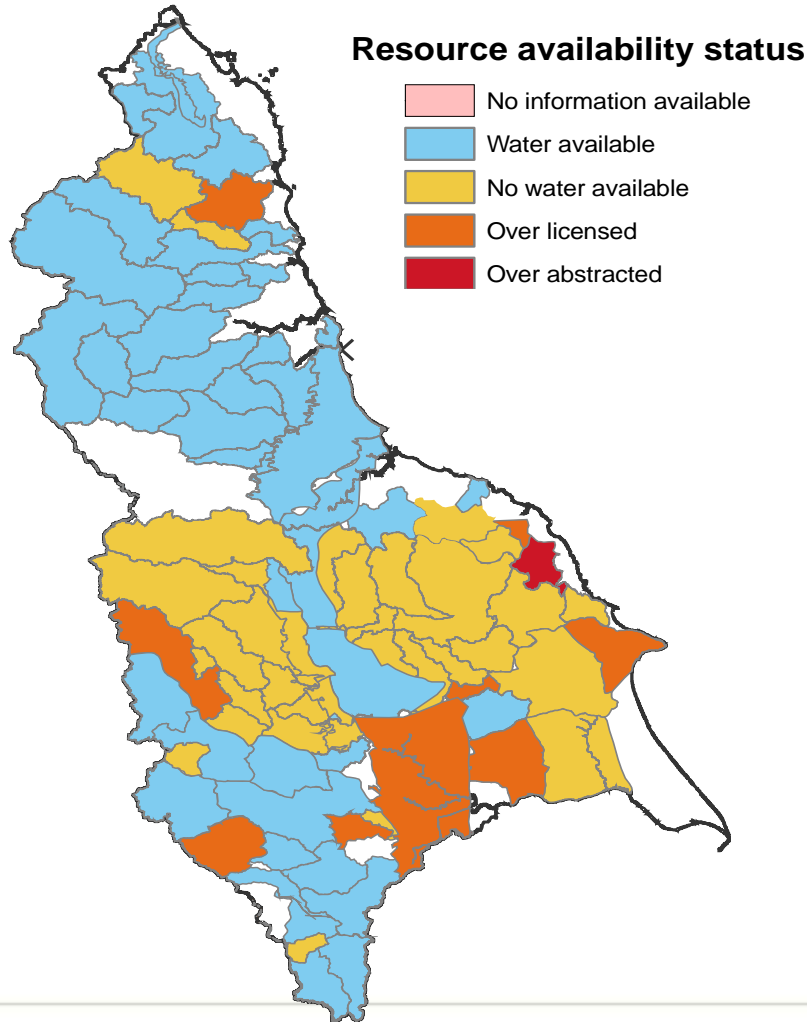
View looking upstream  
Extract from Dwg No:

# coast



- ➔ 1m sea level rise by 2100
- ➔ Up to 1.9m sea level rise possible.

# too little water



- ⇒ 15% decrease in river flows by 2050
- ⇒ 50-80% decrease in some rivers in summer

# natural environment, land management multiple benefits



# climate change risk



**taking action today,  
preparing for tomorrow**